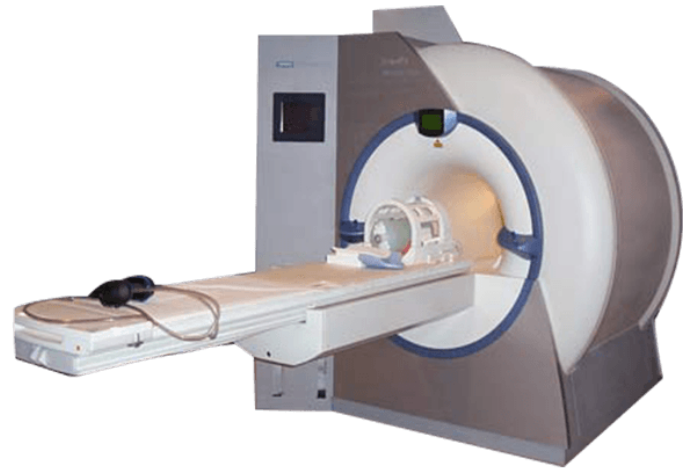


SIEMENS MAGNETOM SONATA 1.5T

SKU: MP14882



Categories: [Close MRI](#)

Description

The Siemens MAGNETOM Sonata 1.5T scanner is a perfect clinical applications unit for cardiovascular and neurological research. It delivers clear images via workflow optimized stored sequences that assist in diagnosis and patient throughput.

Sonata has a short, wide-bore that delivers superior patient comfort. It also sports automated post-processing and image analysis, fast gradients for quicker imaging, and the Integrated Panoramic Array coil enables technicians to scan with up to 16 array elements simultaneously, meaning less patient movement and quicker examination times.